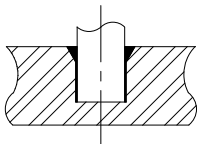
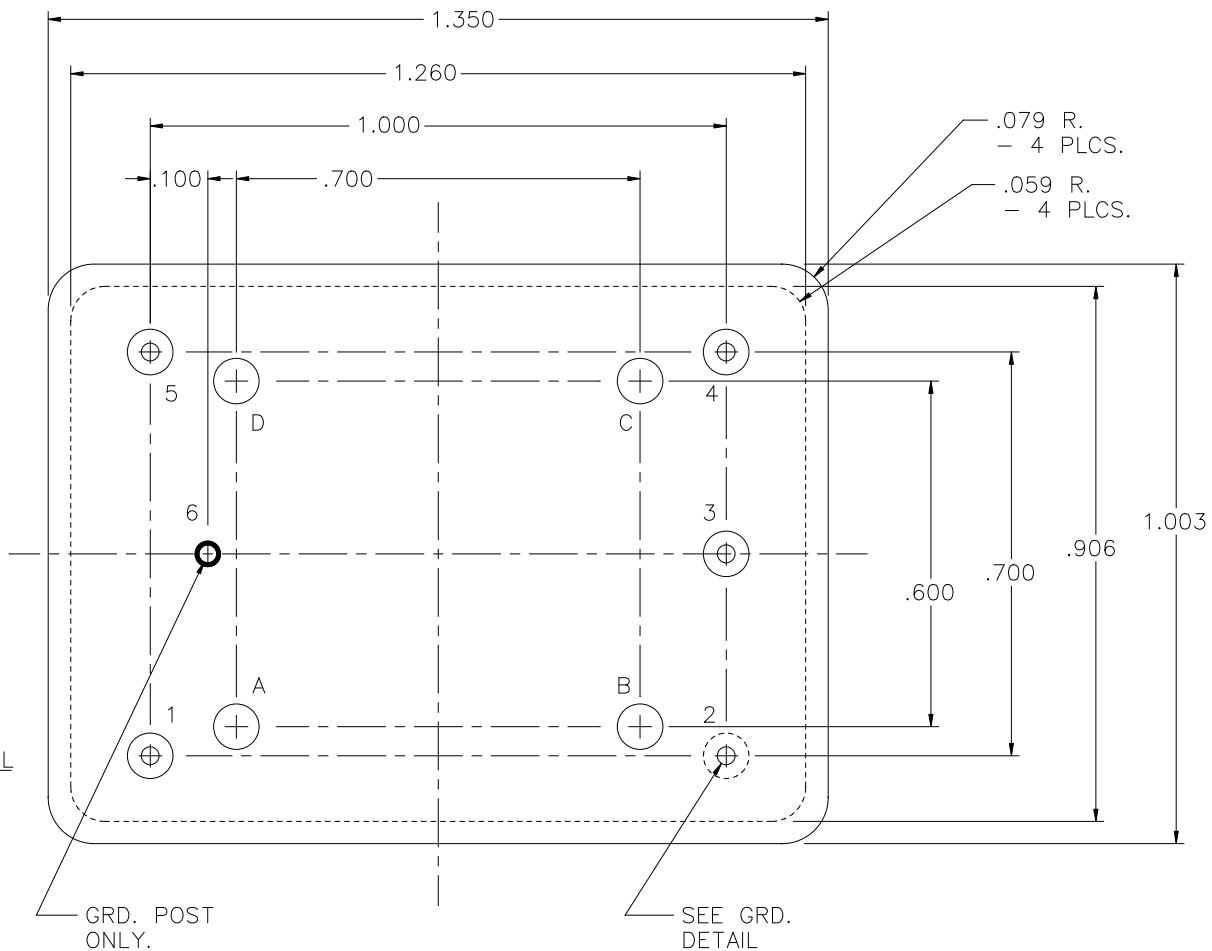
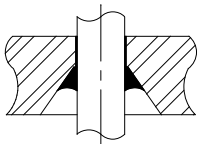


REV	DESCRIPTION OF REVISION	E.C.N.	BY	APPROVED	DATE
-----	-------------------------	--------	----	----------	------

PIN 6 GRD.
POST DETAIL
SCALE: 8:1

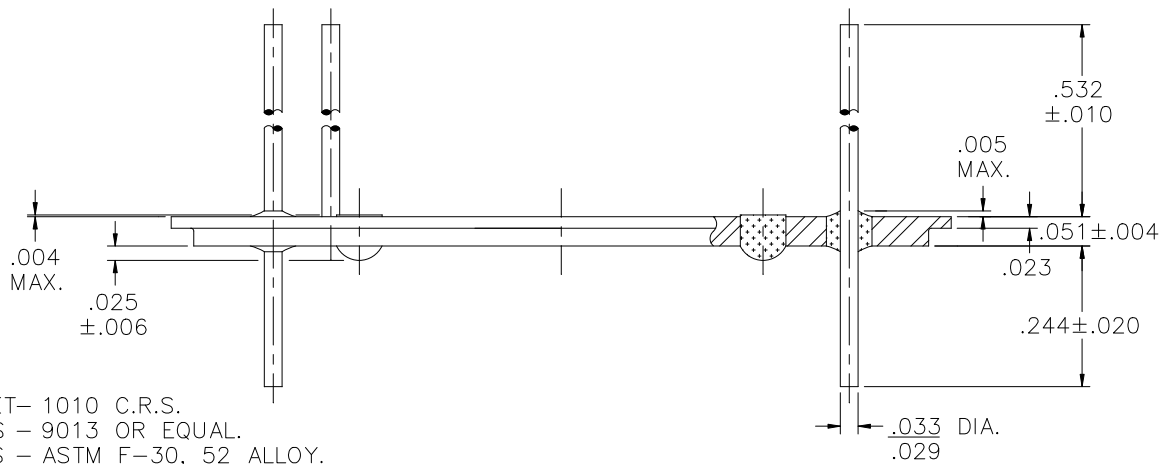


PIN 2 GRD. DETAIL
SCALE: 8:1



GRD. POST ONLY.

SEE GRD. DETAIL




MATERIAL:

EYELET- 1010 C.R.S.
GLASS - 9013 OR EQUAL.
LEADS - ASTM F-30, 52 ALLOY.
BRAZE - BT VTG AG. CU. EUTECTIC.

PLATING:

1. PER MIL-STD QQ-S-571-D TIN
LEAD ALLOY.

DRAWN BY: E.T.W. 01-13-03	MATERIAL: SEE ABOVE			TOLERANCING PER ANSI Y14.5 .X ±.005 .XXX ±.005 .XX ±.005 ANG ±5° UNLESS OTHERWISE SPECIFIED		 6700 W. 47th TERR. MISSION, KS. 66203 TEL: 913-432-2487 FAX: 913-432-0570	PART NUMBER: DC-1003-1350-W T16
CHECKED BY:	APP. SPECS P.T.I P/N: 377732-6100 REF.	SUPERSEDES	NEXT ASSY	SCALE: N.T.S.	FINISH: UNLESS OTHERWISE SPECIFIED		
APPROVED BY:	TITLE: 1.003 x 1.350 EUROPACK HEADER						